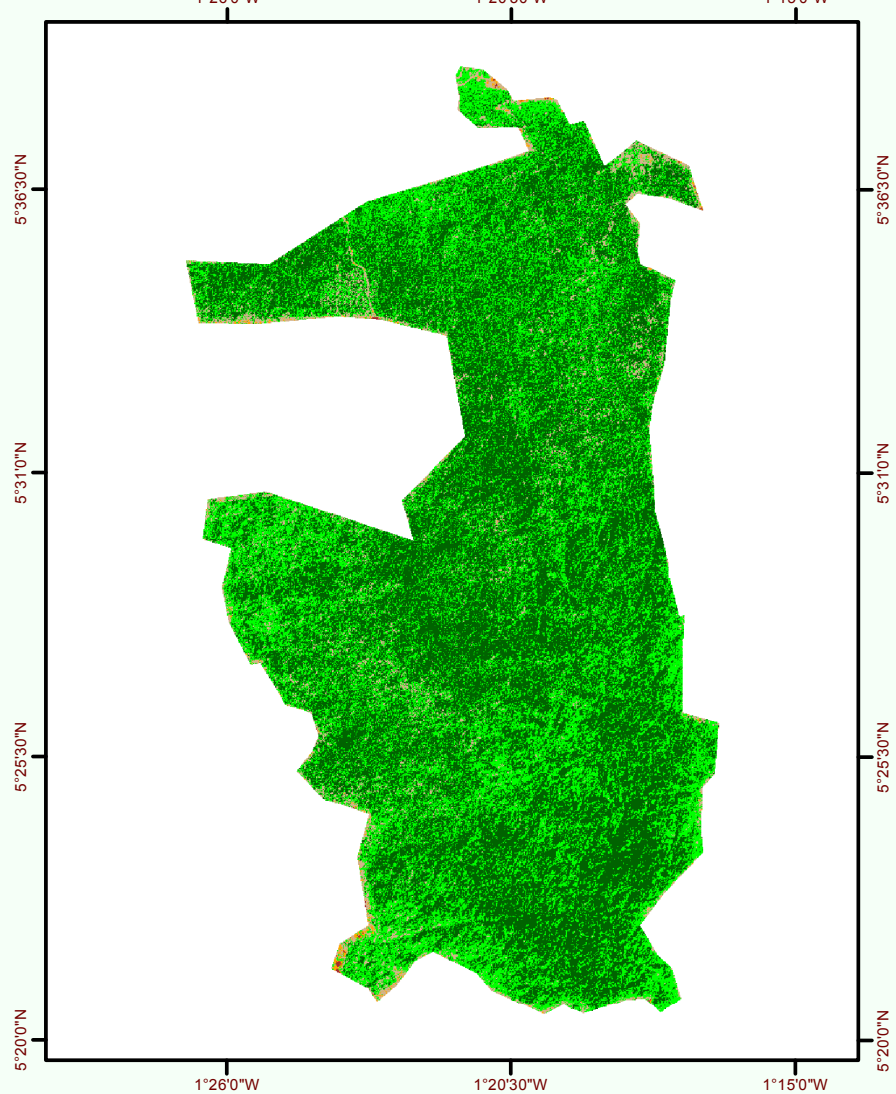
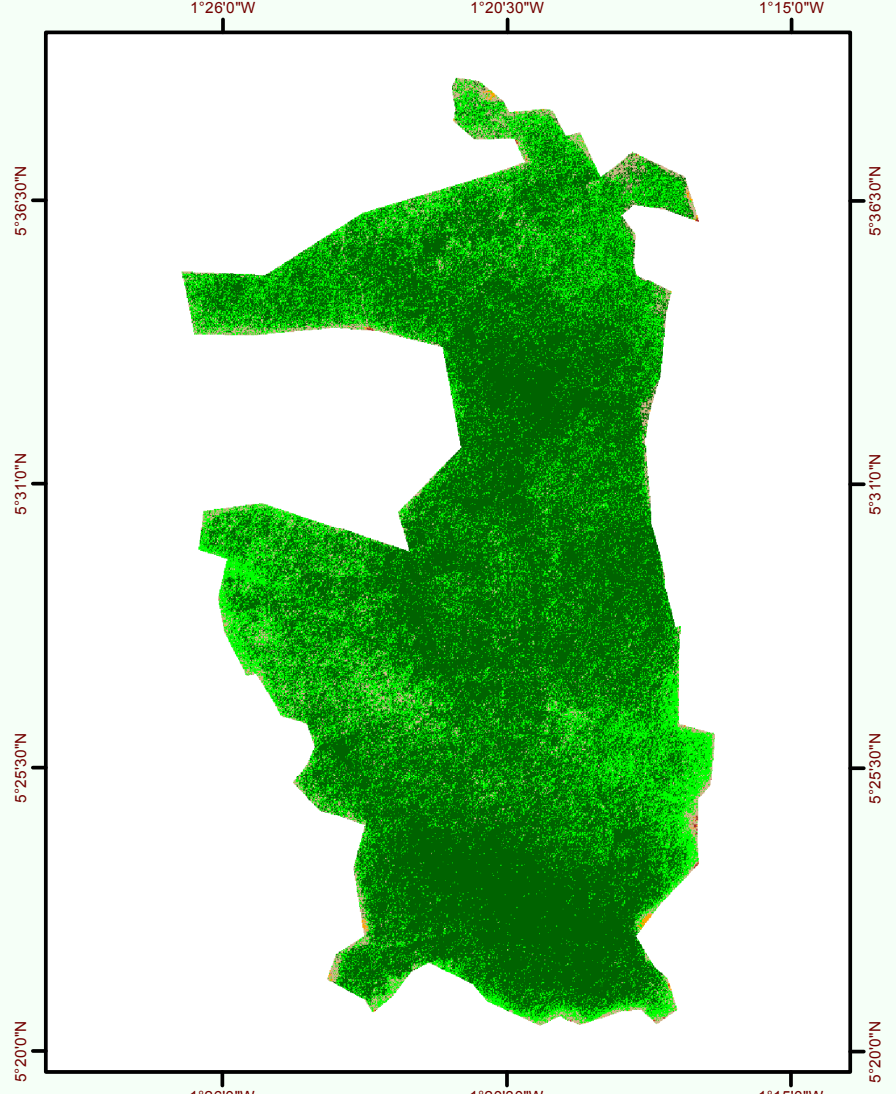


# CLASSIFIED SATELLITE IMAGES PROJECT AREA

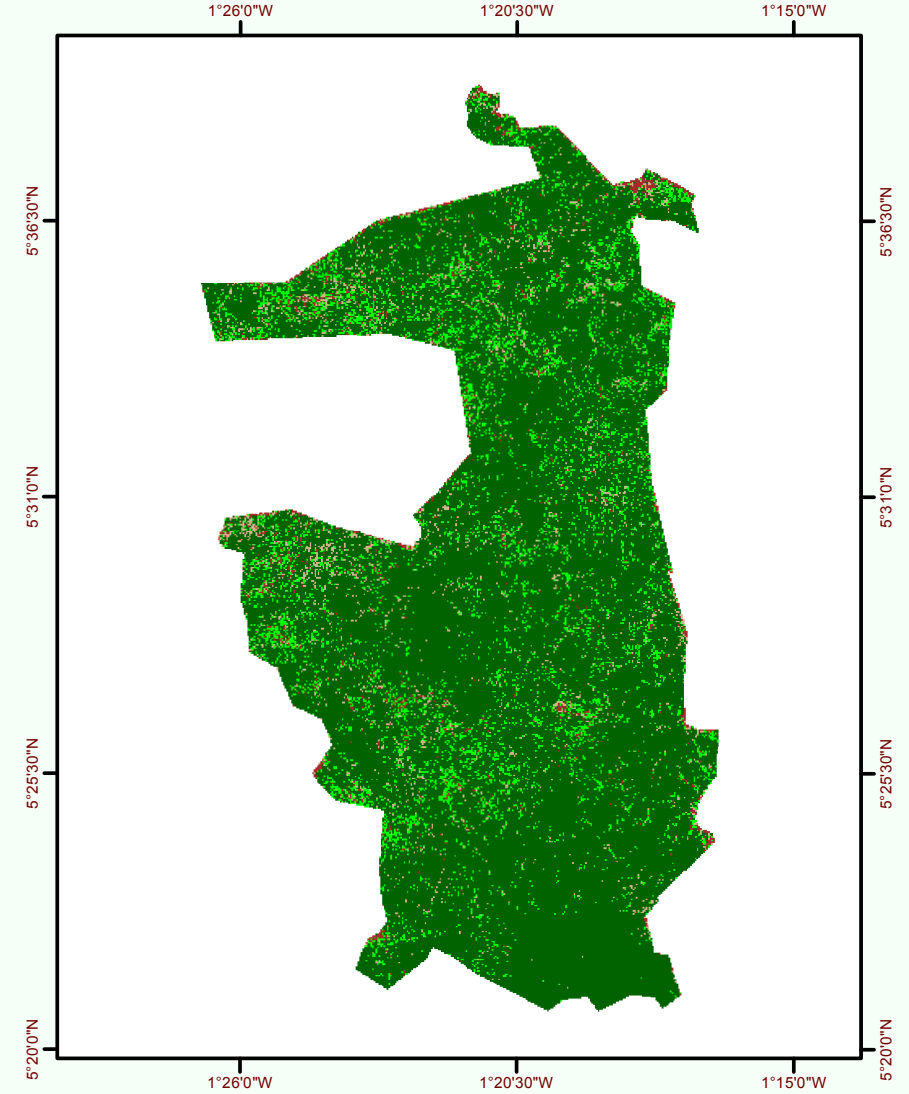
1990



2000



2010

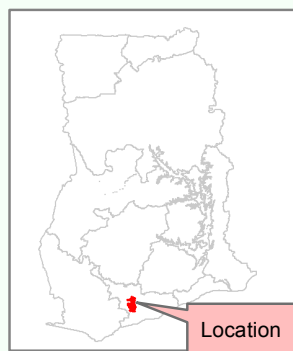


CLASS	PIXEL	SQ_METR	HA	SQ_KM
Multiple canopy	237254	213528600	21352.86	213.5286
Single canopy	154767	139290300	13929.03	139.2903
Shrub/herbaceous	18588	16729200	1672.92	16.7292
Grass/herbaceous	953	857700	85.77	0.8577
Built up/bare area	169	152100	15.21	0.1521

CLASS	PIXEL	SQ_METRE	HA	SQ_KM
Multiple canopy	288698	259828200	25982.82	259.8282
Single canopy	104348	93913200	9391.32	93.9132
Shrub/herbaceous	18214	16392600	1639.26	16.3926
Grass/herbaceous	351	315900	31.59	0.3159
Built up/bare area	120	108000	10.80	0.1080

CLASS	PIXEL	SQ_METRE	HA	SQ_KM
Multiple canopy	84976	305913600	30591.36	305.9136
Single canopy	10326	37173600	3717.36	37.1736
Shrub/herbaceous	6046	21765600	2176.56	21.7656
Grass/herbaceous	1543	5554800	555.48	5.5548
Built up/bare area	41	147600	14.76	0.1476

## Location



## Legend

- ◆ Multiple canopy
- ◆ Single canopy
- ◆ Shrub/herbaceous
- ◆ Grass/herbaceous
- ◆ Built up/bare area

Composed by:  
**CERSGIS**  
 CENTER FOR REMOTE SENSING AND GEOGRAPHIC INFORMATION SERVICES  
 PMB 17, Legon - Accra  
 :: Tel: +233-0302-500301 / 501796  
 :: Fax: +233-0302-500310  
 Email: cersgis@ug.edu.gh  
 URL: www.cersgis.org